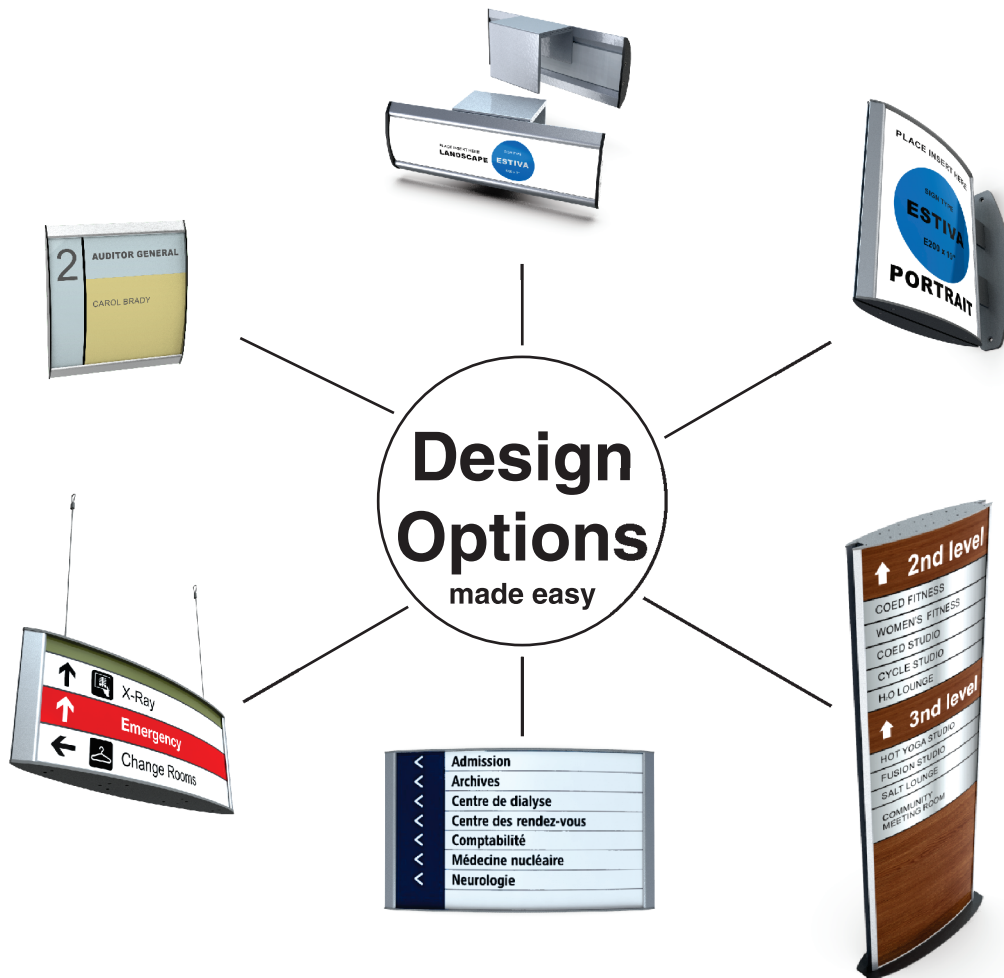


ESTIVA

CURVED SIGN FRAMES

Removable Lens Sign System

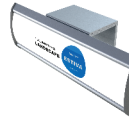
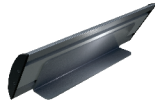
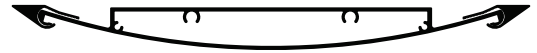


INTERIOR ARCHITECTURAL SIGNS

SIGN CONSULTANTS | ROOM IDENTIFICATION | DIRECTORIES | PROTRUDING | SUSPENDED
PYLONS | CUBICAL | DESK TOP | BRAILLE & TACTILE | DIGITAL PRINTING | DESIGN SERVICE

Estiva curved Frame Profile

Sold Exclusively to Sign Professionals



E60

E60 x 6" Room ID Landscape

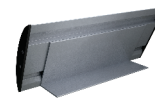
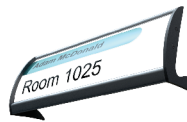
E60 x 6" Boomerang Desk Stand Landscape

E60 x 8" Econo Desk Stand Landscape

E60 x 8" Boomerang Cubical Bracket Landscape

E60 x 10" Room ID Landscape

E60 x 12" Room ID Landscape



E80

E80 x 5" Kangaroo Desk Stand Portrait

pc80 x 6" Room ID Landscape

E80 x 8" Room ID Landscape

E80 x 8" Boomerang Desk Stand Landscape

E80 x 8" Econo Desk Stand Landscape

E80 x 8" Adjustable Cubical Bracket Landscape



E100

E100 x 2.5" Room ID Portrait

E100 x 2.5" Room ID Landscape

E100 x 6" Boomerang Desk Top Landscape

E100 x 8" Cubical Landscape

E100 x 12" Room ID Landscape

E100 x 24" d/s Suspended Landscape



E150

E150 x 2.5" Cubical Bracket Portrait

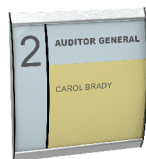
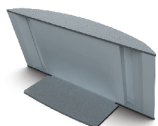
E150 x 6" Room ID Portrait

E150 x 8" Room ID Portrait

E150 x 6" Wall Bracket Portrait Landscape

E150 x 8" Wall Bracket Portrait

E150 x 24" d/s Suspended Landscape



E200

E200 x 4" Kangaroo Desk Stand Portrait

E200 x 8" Room ID Portrait

E200 x 8" Room ID Landscape

E200 x 10" Room ID Portrait

E200x11.2" Directory 2" header, blk divider Portrait

E200 x 12" Wall Bracket Landscape



Eletter

E Letter x 2.5"
Room ID
Portrait



E Letter x 8.5"
Room ID
Portrait



E Letter x 11"
Room ID
Portrait



E Letter x 14"
Room ID
Portrait



E Letter x 11"
Wall Bracket
Portrait



E Letter x 11
Wall Bracket
Landscape

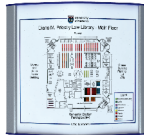


E11

E11 x 6"
Directory
Portrait



E11 x 8.5"
Room ID
Portrait



E11 x 11"
Room ID
Portrait



E11 x 11"
Wall Bracket
Portrait



E11 x 11"
Wall Bracket
Landscape



E11 x 17"
Metal End Caps
Landscape



E300

E300 x 6"
Room ID
Portrait



E300 x 8"
Room ID
Portrait



E300 x 12"
Room ID
Portrait



E300 x 18"
Wayfinding ID
Portrait



E300 x 24"
Directory
Portrait

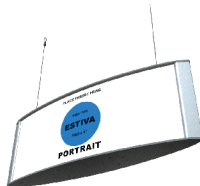


E300 x 48"
Room ID
Landscape



E400

E400 x 4"
Room ID
Portrait



E400 x 6"
d/s Suspended
Portrait



E400 x 8.5"
Room ID
Portrait



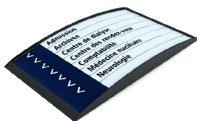
E400 x 16"
Directory
Portrait



E400 x 16"
d/s Suspended
Portrait



E400 x 36"
Directory
Landscape



E500

E500 x 12"
Room ID
Portrait



E500 x 24"
Room ID
Portrait



E500 x 60"
d/s Pylon Wide
Portrait



E600

E600 x 18"
Room ID
Landscape



E600 x 24"
Directory Room ID
Portrait



E600 x 72"
d/s Pylon
Portrait

FRAMES:

Extruded aluminum sign frames with a durable clear anodized finish as standard. Black anodizing available on most frames. Color matching paint finish available upon request.

Frames larger than 12" x 12" come standard with mounting holes.

Double sided tape, Velcro, magnets or fabric pins available upon request as mounting options.

END CAPS:

Plastic end caps available on single sided sign frames only (E60 - E300). Standard plastic end cap colors are black or grey.

Aluminum caps available for all frame styles with exception of the pc40. Aluminum end caps come standard in a black or silver paint finish.

Color matching paint finish available upon request.

CLEAR COVERS:

Pet-G non-glare lens supplied with all frames.

Lens thickness ranges from 0.5mm to 2mm based on sign type.

Optional ADA compliant tactile & raster braille available upon request.

INSERTS:

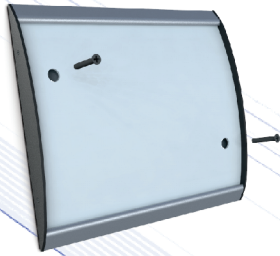
Printed graphics displayed behind clear cover.

Inserts can range from paper prints to engraved laminates.

Most lens options can be supplied with tactile & raster braille.

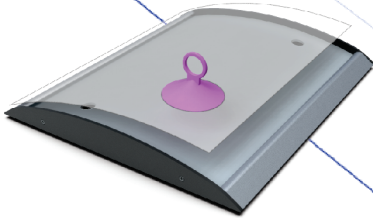
OPTIONS:

Custom designed end caps, bases, wall brackets & divider strips available upon request.



OPTIONAL
MOUNTING SCREWS

SUCTION CUP
REMOVAL TOOL



LANDSCAPE

LANDSCAPE

Sign frames have end caps on the each side of the sign in reference to the text.

CURVE OF THE SIGN FRAME IS TOP TO BOTTOM.



PORTRAIT

PORTRAIT

Sign frames have end caps on the top & bottom of the sign in reference to the text.

CURVE OF SIGN FRAME IS LEFT TO RIGHT.

Frame	Width	Insert Width
E40	NA	NA
E60	2.94	2.26"/58mm
E80	3.72"	3.05"/78mm
E100	4.51"	3.88"/98mm
E120	NA	NA
E150	6.78"	5.78"/147mm
E200	8.75"	7.72"/196mm
E LETTER	9.58"	8.50"/217mm
E11	12.28"	11"/279mm
E300	12.99"	11.69"/297mm
E14	15.34"	14"/356mm
E400	16.92"	15.61"/397mm
E17	18.69"	17"/432mm
E500	20.86"	19.59"/498mm
E22	23.26"	22"/559mm
E600	24.80"	23.52"/598mm
E700	28.88"	27.56"/700mm
E800	32.68"	31.43"/799mm
E900	36.68"	35.40"/899mm
E1000	40.55"	39.31"/999mm
E1100	44.61"	43.25"/1099mm
E1200	48.49"	47.19"/1199mm

STANDARD FEATURES

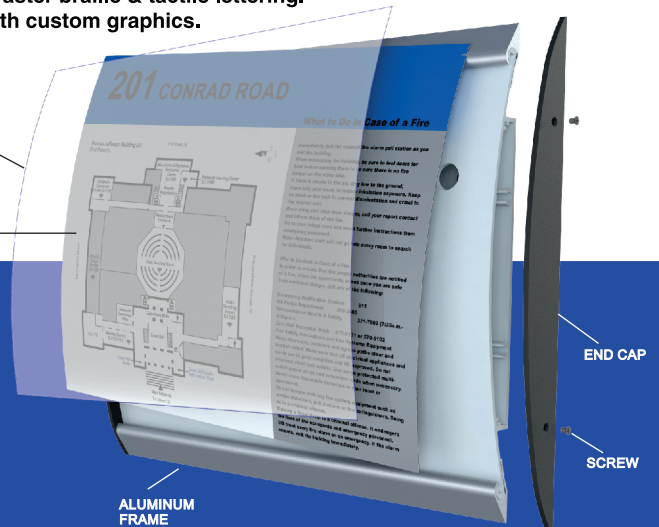
- Aluminum extruded sign frames offered in 20 widths (E60 - E1200).
- Frames are available as in a clear or black anodized finish.
- Custom frame lengths available from 1" - 96".
- Plastic end caps come standard in grey or black.
- Metal end caps come standard in silver or black.
- Frames come standard with one clear, non-glare lens(0.5mm - 3mm).
- Sign larger than 12" x 12" mounting holes are standard.

OPTIONS

- Frames & end caps can be custom painted to match any Pantone color.
- Clear gloss lenses.
- d/s tape or mounting holes on any size frame.
- ADA compliant raster braille & tactile lettering.
- Paper inserts with custom graphics.

NON-GLARE
CLEAR COVER

PAPER INSERT



END CAP

SCREW

ALUMINUM
FRAME

EXTENSIA INTERNATIONAL SYSTEMS INC.

41 PROTON STREET SOUTH
DUNDALK, ONTARIO, N0C 1B0
1-866-275-1996
SALES@EXTENSIA SIGN.COM

