

ADJUSTABLE CUBICAL BRACKET

FRAME ACCESSORIES

LOCKING DOVETAILS

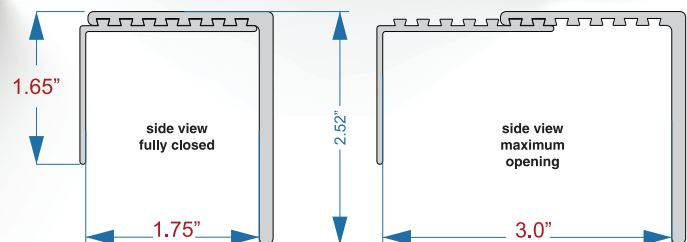
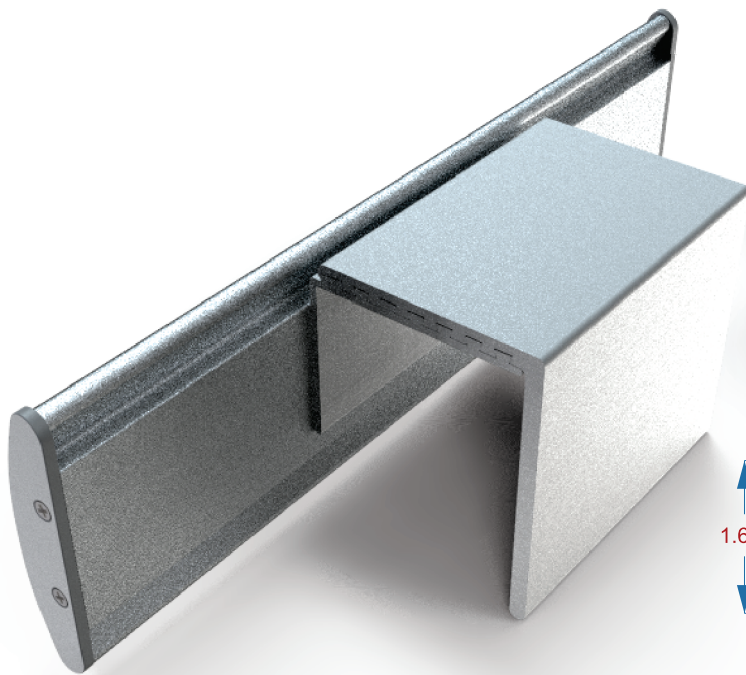
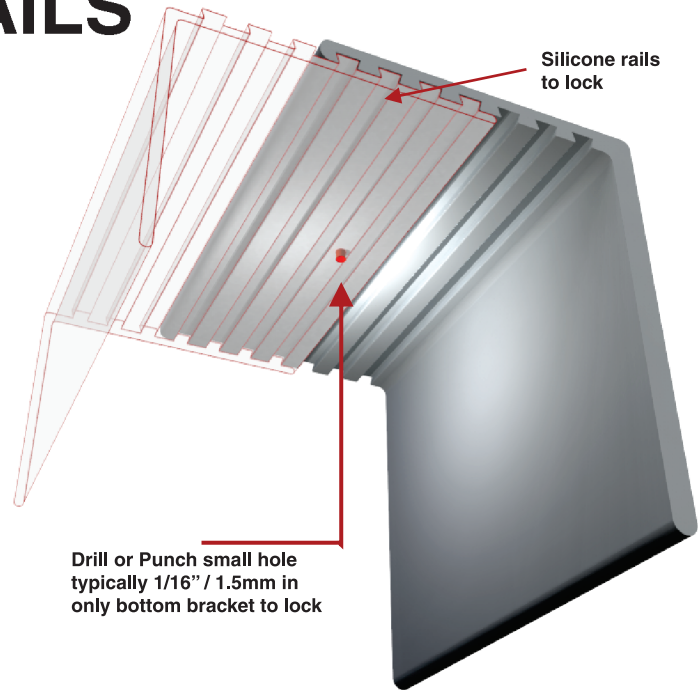
Option A: Silicon

Two piece design can easily be joined by adding silicon into the dovetails grooves while allowing it to dry at the desired width of the cubical wall.

Option B: Drill hole

Drill a small hole through the bottom extrusion & into the top profile the dovetails will lock firm.

Do not drill through the top of the cubical extrusion.



ADJUSTMENT RANGE : 1.25" / 32mm

